



## VILLAS

UNIT TYPES, SPECIFICATIONS & OPTIONS

Our bespoke Villa builds are larger scale builds than our bungalows allowing for three and four bedroom options. With many different villa sizes available, floor plans and interior layouts can be altered for customer specifications. Our villas offer a luxurious affordable home with a modern interior design.



### STANDARD SPECIFICATIONS

ALL UNITS ARE TURN KEY UNLESS INSTRUCTED OTHERWISE.

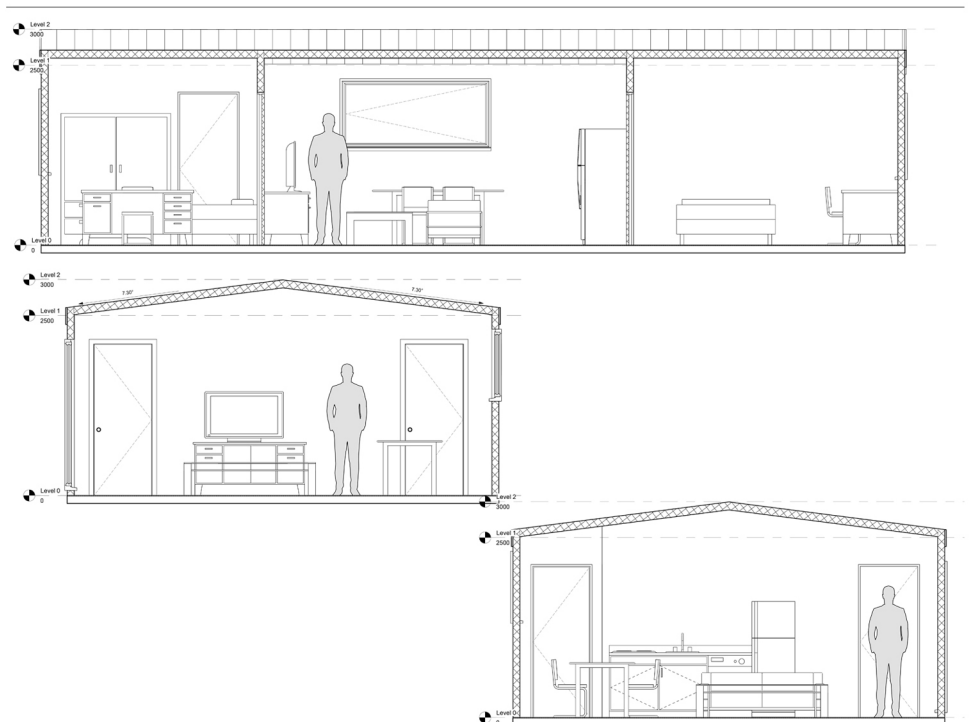
- 120mm Insulation
- Double glazed aluminum Doors and windows
- Air to air Dual heating system
- Air Con
- Air recuperators
- Floors
- Fitted bathroom
- Internal doors
- 5m of kitchen cabinets and Appliances included.
- Unit is wired and plumbed
- Internal and external lighting
- Laminate flooring

# OPTIONAL EXTRAS

- ✓ Feature walls
- ✓ Triple glazed windows
- ✓ Stretched ceiling
- ✓ Tiled bathroom
- ✓ Composite patios
- ✓ Roofed patios
- ✓ Jacuzzis
- ✓ Built in Sauna
- ✓ Upgraded flooring



# OPTIONS



## 2 BEDROOM

UNFURNISHED OPTIONS (EXCL BIC'S)	SIZE	DIMENSIONS	PRICE (EX VAT)
1 BEDROOM 1 BATHROOM KITCHEN/LIVING	30 SQ.M	5X6M	55,500
2 BEDROOM 1 BATHROOM KITCHEN/LIVING	46 SQ.M	5X9M	75,500
2 BEDROOM 1 BATHROOM KITCHEN/LIVING	62 SQ.M	5X12M	90,000
2 BEDROOM 1 BATHROOM KITCHEN/LIVING	36 SQ.M	6X6M	62,000
2 BEDROOM 1 BATHROOM KITCHEN/LIVING	54 SQ.M	6X9M	81,500
2 BEDROOM 1 BATHROOM KITCHEN/LIVING	72 SQ.M	6X12M	105,000

## 3 BEDROOM

UNFURNISHED OPTIONS (EXCL BIC'S)	SIZE	DIMENSIONS	PRICE (EX VAT)
3 BEDROOM 1 BATHROOM KITCHEN/LIVING	72 SQ.M	6X12M	108,000
3 BEDROOM 2 BATHROOM KITCHEN/LIVING	72 SQ.M	6X12M	108,000



## DELIVERY & DEPOSIT

Lead times is 6 - 8 weeks from payment depending on factory space at the time. We require a deposit of 50% upon signing the build contract and 50% after inspection and before delivery to site

## TRANSPORT

Free nationwide Delivery, Customer covers cost of crane hire on the day of installation

**EMAIL:** [INFO@MODULAROUTLOOKIRELAND.COM](mailto:INFO@MODULAROUTLOOKIRELAND.COM)



[WWW.MODULAROUTLOOKIRELAND.COM](http://WWW.MODULAROUTLOOKIRELAND.COM)

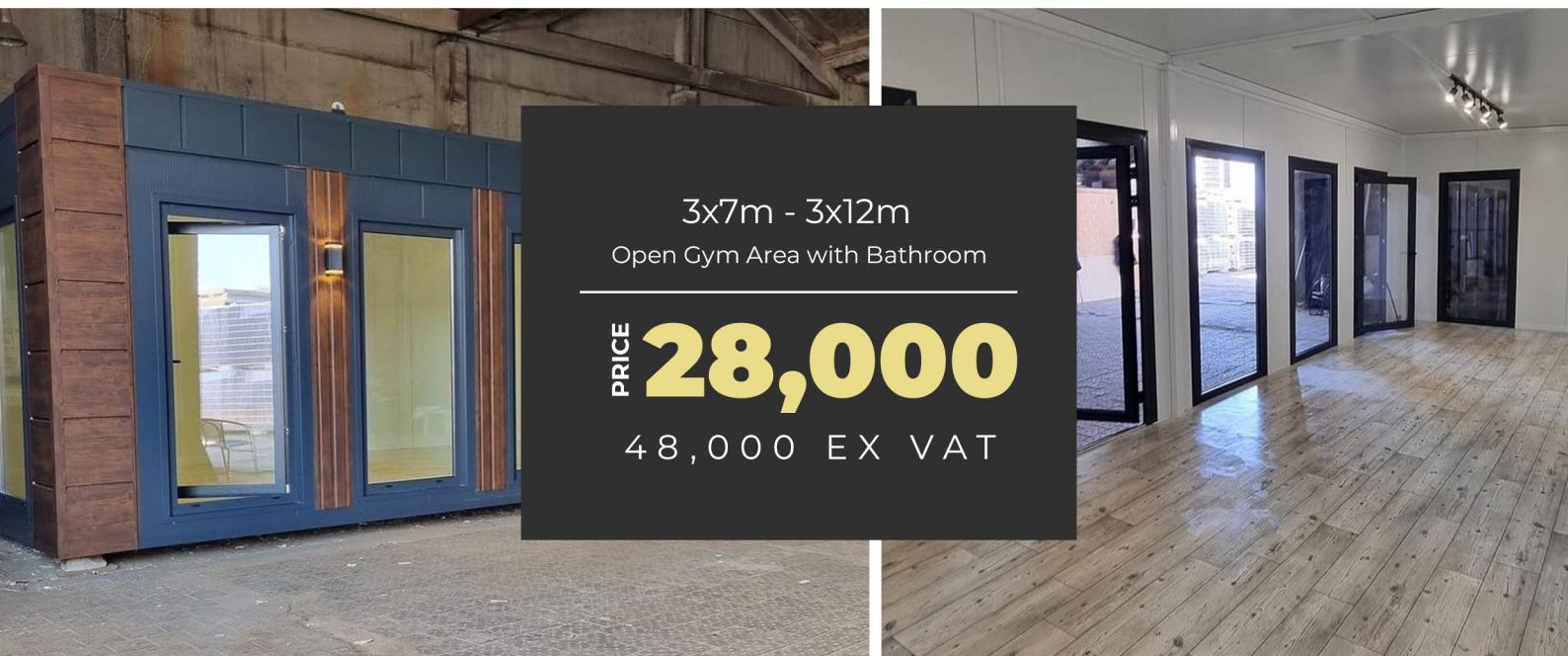


## HOME GYM

UNIT TYPES, SPECIFICATIONS & OPTIONS

Modular outlooks builds are built at our factory and delivered to site for installation . Our units are designed for maximum comfort, Durability and aesthetic appeal, they have a low impact on the environment in which they are placed while maintaining the same properties of a traditional Building.

Our Home Gym Builds are Ideal for sports clubs or even your very own gym space at home.. Ranging in sizes we've designed our home gyms to offer Everything that someone invested in regular training needs from their very own training space. From weight and cardio areas to Saunas and ice baths we have Designs to cater for all aspects of training and Recovery.



3x7m - 3x12m  
Open Gym Area with Bathroom

PRICE **28,000**  
48,000 EX VAT

### STANDARD SPECIFICATIONS

ALL UNITS ARE TURN KEY UNLESS INSTRUCTED OTHERWISE.

- 120mm Insulation
- Triple glazed aluminum Doors and windows
- Dual heating system
- Air Con
- Air recuperators
- Foam Training floor
- Laminate Flooring
- Lockers And storage.
- Shower Room

## OPTIONAL EXTRAS

- ✓ Feature walls
- ✓ Triple glazed windows
- ✓ Tiled bathroom
- ✓ Composite patios
- ✓ Roofed patios
- ✓ Jacuzzis
- ✓ Built in Sauna
- ✓ Ice Baths



## OPTIONS

UNFURNISHED OPTIONS (EXCL BIC'S)	SIZE	DIMENSIONS	PRICE (EX VAT)
OPEN GYM AREA WITH BATHROOM	36SQ.M	3X7M - 3X12M	28,000 - 48,000
GYM AREA, SHOWER ROOM, SAUNA	36 SQ.M	3X12M	60,000

Custom Builds with custom designs internal layouts also Available.

## DELIVERY & DEPOSIT

Lead times is 6 - 8 weeks from payment depending on factory space at the time. We require a deposit of 50% upon signing the build contract and 50% after inspection and before delivery to site

## TRANSPORT

Free nationwide Delivery, Customer covers cost of crane hire on the day of installation

**EMAIL:** [INFO@MODULAROUTLOOKIRELAND.COM](mailto:INFO@MODULAROUTLOOKIRELAND.COM)



[WWW.MODULAROUTLOOKIRELAND.COM](http://WWW.MODULAROUTLOOKIRELAND.COM)



## OFFICE

UNIT TYPES, SPECIFICATIONS & OPTIONS

Modular outlooks builds are built at our factory and delivered to site for installation . Our units are designed for maximum comfort, Durability and aesthetic appeal, they have a low impact on the environment in which they are placed while maintaining the same properties of a traditional Building.

Our Office Builds are Ideal for people who work from home or have a hobby or pastime which requires its own space.. Ranging in sizes we've designed these Office builds to offer a luxurious affordable home work space.



3x7m X 21sq.m

1 office 1 Bathroom

PRICE

**29,500**

EX.VAT

### STANDARD SPECIFICATIONS

ALL UNITS ARE TURN KEY UNLESS INSTRUCTED OTHERWISE.

- 120mm Insulation
- Triple glazed aluminum Doors and windows
- Dual heating system
- Air Con
- Air recuperators
- Laminate Floors
- 2m of kitchen
- Unit is wired and plumbed
- Internal and external lighting  
Sockets with Usb Ports.
- Bathroom

# OPTIONAL EXTRAS

- ✓ Feature walls
- ✓ Stretched ceiling
- ✓ Composite patios
- ✓ Triple glazed windows
- ✓ Tiled bathroom
- ✓ Roofed patios

## OPTIONS

### 1 BEDROOM

UNFURNISHED OPTIONS (EXCL BIC'S)	SIZE	DIMENSIONS	PRICE (EX VAT)
1 OFFICE 1 BATHROOM	21 SQ.M	3X7M	29,500
1 OFFICE 1 BATHROOM	24 SQ.M	3X8M	31,500
2 OFFICE 1 BATHROOM	33 SQ.M	3X11M	45,000

### DELIVERY & DEPOSIT

Lead times is 6 - 8 weeks from payment depending on factory space at the time. We require a deposit of 50% upon signing the build contract and 50% after inspection and before delivery to site

### TRANSPORT

Free nationwide Delivery, Customer covers cost of crane hire on the day of installation

**EMAIL:** [INFO@MODULAROUTLOOKIRELAND.COM](mailto:INFO@MODULAROUTLOOKIRELAND.COM)



[WWW.MODULAROUTLOOKIRELAND.COM](http://WWW.MODULAROUTLOOKIRELAND.COM)



# BUNGALOW

UNIT TYPES, SPECIFICATIONS & OPTIONS

Modular outlooks builds are built at our factory and delivered to site for installation . Our units are designed for maximum comfort, Durability and aesthetic appeal, they have a low impact on the environment in which they are placed while maintaining the same properties of a traditional Building.

Our Bungalow Builds are one of our more popular style builds. Ranging in sizes we've designed these bungalow builds to offer a luxurious affordable home, While still catering for customers specifications and needs.



3x7m X 21sq.m

1 bedroom 1 bathroom kitchen/living

PRICE **31,500**

EX.VAT

## STANDARD SPECIFICATIONS

ALL UNITS ARE TURN KEY UNLESS INSTRUCTED OTHERWISE.

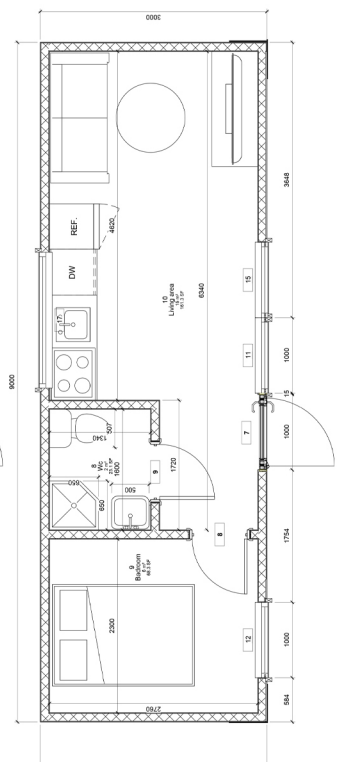
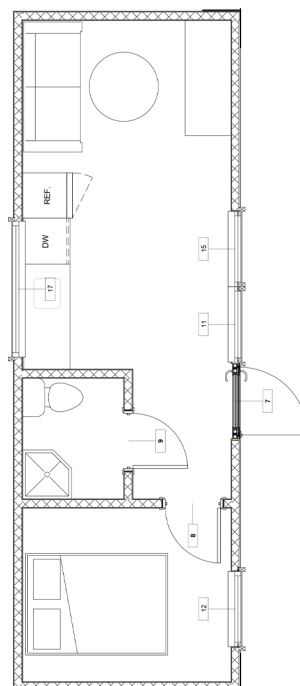
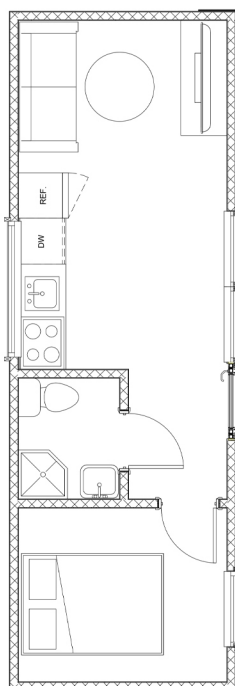
- 120mm Insulation
- Double glazed aluminum Doors and windows
- Dual heating system
- Air Con
- Air recuperators
- Floors
- 2m of kitchen cabinet including Sink and 2 element Hob
- Unit is wired and plumbed
- Internal and external lighting

# OPTIONAL EXTRAS

- ✓ Feature walls
- ✓ Stretched ceiling
- ✓ Extended kitchen and kitchen appliances
- ✓ Tiled bathroom
- ✓ Composite patios
- ✓ Roofed patios
- ✓ Jacuzzis
- ✓ Built in Sauna
- ✓ Upgraded flooring
- ✓ Laminate flooring/tiles



# OPTIONS



# 1 BEDROOM

UNFURNISHED OPTIONS (EXCL BIC'S)	SIZE	DIMENSIONS	PRICE (EX VAT)
1 BEDROOM 1 BATHROOM KITCHEN/LIVING	21 SQ.M	3X7M	31,500
1 BEDROOM 1 BATHROOM KITCHEN/LIVING	24 SQ.M	3X8M	36,500
1 BEDROOM 1 BATHROOM KITCHEN/LIVING	27 SQ.M	3X9M	40,500
1 BEDROOM 1 BATHROOM KITCHEN/LIVING	30 SQ.M	3X10M	45,000
1 BEDROOM 1 BATHROOM KITCHEN/LIVING	33 SQ.M	3X11M	49,500
1 BEDROOM 1 BATHROOM KITCHEN/LIVING	36 SQ.M	3X12M	54,000

# 2 BEDROOM

UNFURNISHED OPTIONS (EXCL BIC'S)	SIZE	DIMENSIONS	PRICE (EX VAT)
2 BEDROOM 1 BATHROOM KITCHEN/LIVING	33 SQ.M	3X11M	51,500
2 BEDROOM 1 BATHROOM KITCHEN/LIVING	36 SQ.M	3X12M	56,000



## DELIVERY & DEPOSIT

Lead times is 6 - 8 weeks from payment depending on factory space at the time. We require a deposit of 50% upon signing the build contract and 50% after inspection and before delivery to site

## TRANSPORT

Free nationwide Delivery, Customer covers cost of crane hire on the day of installation

**EMAIL:** [INFO@MODULAROUTLOOKIRELAND.COM](mailto:INFO@MODULAROUTLOOKIRELAND.COM)



[WWW.MODULAROUTLOOKIRELAND.COM](http://WWW.MODULAROUTLOOKIRELAND.COM)



# GARDEN ROOM AND HOME OFFICE

UNIT TYPES, SPECIFICATIONS & OPTIONS

Modular outlooks builds are built at our factory and delivered to site for installation . Our units are designed for maximum comfort, Durability and aesthetic appeal, they have a low impact on the environment in which they are placed while maintaining the same properties of a traditional Building.

Our Garden and Office Builds are Ideal for people who work from home or have a hobby or pastime which requires its own space.. Ranging in sizes we've designed these Office builds to offer a luxurious affordable home work space.



## STANDARD SPECIFICATIONS

ALL UNITS ARE TURN KEY UNLESS INSTRUCTED OTHERWISE.

- 120mm Insulation
- Double glazed aluminum Doors and windows
- Dual heating system
- Air Con
- Air recuperators
- 2m of kitchenette
- Unit is wired and plumbed
- Internal and external lighting
- Sockets with Usb Ports.

## OPTIONAL EXTRAS

- ✓ Feature walls
- ✓ Triple glazed windows
- ✓ Stretched ceiling
- ✓ Bathroom
- ✓ Composite patios
- ✓ Roofed patios
- ✓ Bar



## OPTIONS

SIZE	DIMENSIONS
15 SQ.M	3X5M
18 SQ.M	3X6M
21 SQ.M	3X7M
24 SQ.M	3X8M
33 SQ.M	3X11M



All build Sizes can be customized to suit customers needs.

## DELIVERY & DEPOSIT

Lead times is 6 - 8 weeks from payment depending on factory space at the time. We require a deposit of 50% upon signing the build contract and 50% after inspection and before delivery to site

## TRANSPORT

Free nationwide Delivery, Customer covers cost of crane hire on the day of installation

**EMAIL:** [INFO@MODULAROUTLOOKIRELAND.COM](mailto:INFO@MODULAROUTLOOKIRELAND.COM)



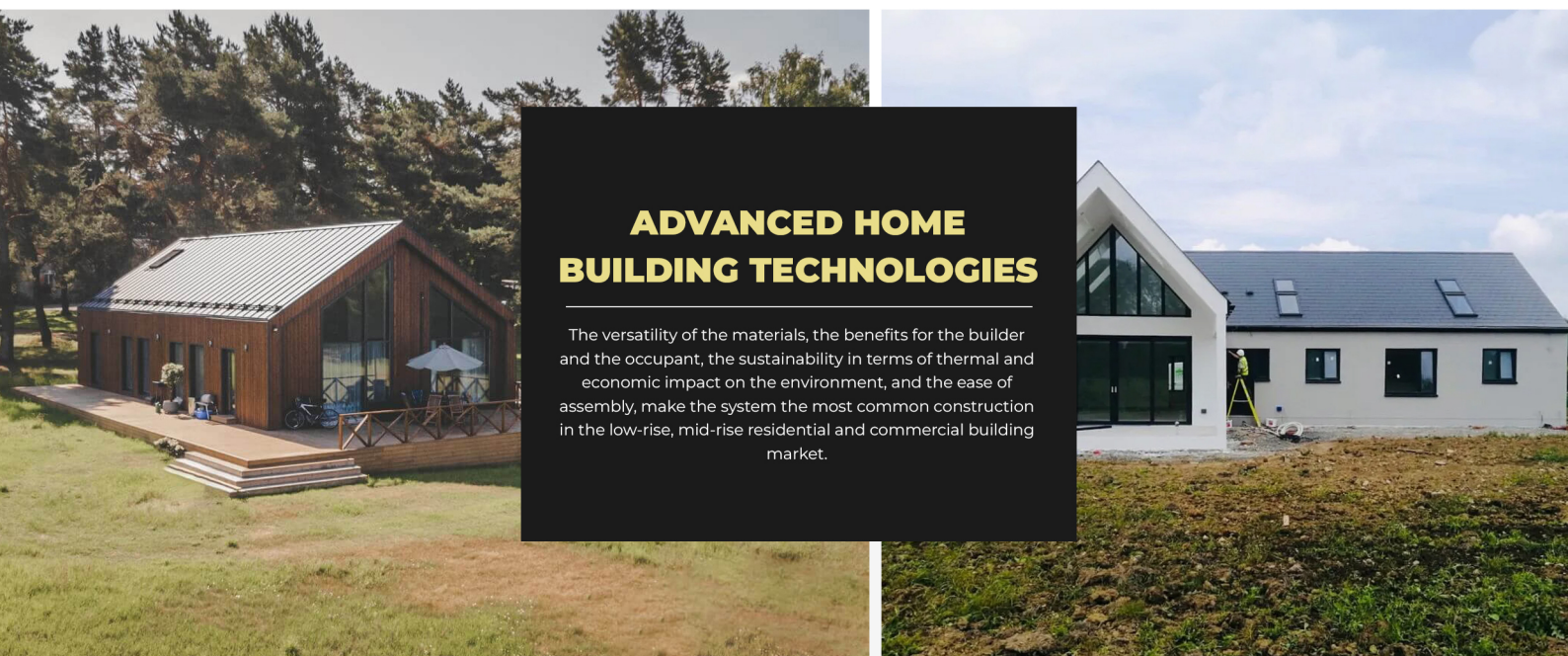
[WWW.MODULAROUTLOOKIRELAND.COM](http://WWW.MODULAROUTLOOKIRELAND.COM)



# SIP HOMES

AN UNRIVALLED RANGE OF BUILDING PRODUCTS

Modular Outlook Homes brings together cutting-edge sustainable housing technologies to conserve energy resources and replace old construction methods. We are proud to be at the forefront of the market for high-quality panel systems for residential, commercial and industrial buildings.



## ADVANCED HOME BUILDING TECHNOLOGIES

The versatility of the materials, the benefits for the builder and the occupant, the sustainability in terms of thermal and economic impact on the environment, and the ease of assembly, make the system the most common construction in the low-rise, mid-rise residential and commercial building market.

## AN INNOVATION-DRIVEN EXPERIENCE

The company lives the triple challenge of quality, productivity and tight deadlines.



### TECHNOLOGY

Panel houses are assembled quickly and to a high standard on site, using panels specially made in the factory.



### OFFER

All our kits are prepared using structural insulated panels from floor to ceiling



### EXPERIENCE

To become an expert in any field, you need to spend 10,000 hours on it. A combination of theoretical and practical knowledge.



### PARTNERSHIP

Architectural concepts are made in the factory and then constructed on site without error

# SIP PANEL HOMES - WHAT ARE THE ADVANTAGES?

## ✔ TIME

very fast to build (about 2 months) – time depends on the project and the size of the building and the materials available;

## ✔ QUALITY

A SIP house meets all quality standards;

## ✔ PRICE

very low compared to other housing prices, taking into account the construction costs (materials, labour, time);

## ✔ NEW

no one has lived there yet;

## ✔ DESIGN

every project looks beautiful and aesthetically pleasing;

## ✔ ENERGY SAVING

a construction technology that saves heat costs;

## ✔ ENERGY EFFICIENCY

on request, can meet A++ standards;

## ✔ ENVIRONMENTALLY FRIENDLY

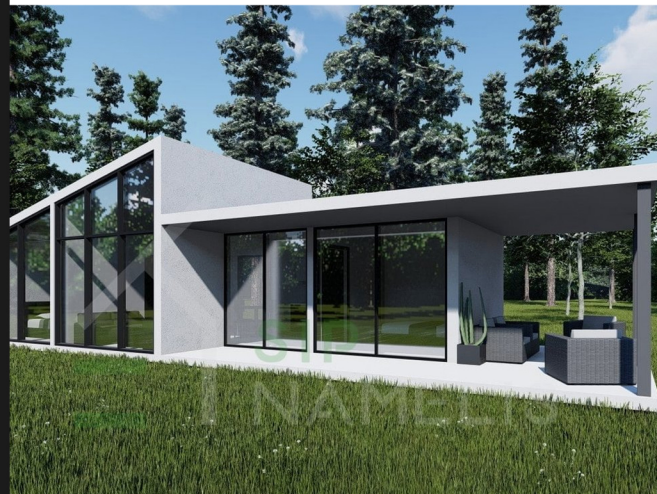
no pollution for the environment, no pollution for you and no construction waste on site;

## ✔ DURABILITY

SIP homes have a very long lifetime;

## ✔ RESISTANCE TO WEATHERING

(rain, snow, cold, heat).



## SIP HOUSE - WHAT MAKES IT SPECIAL?

SIP House – when you want it fast and quality! And it's aesthetically pleasing, too, because the house designs follow the design trends for such homes. So everyone can choose the SIP panel house project they like best and our team will get to work building it. It is worth noting that Modular Outlook Ireland also designs to individual orders, so you will have a unique SIP panel house.

**EMAIL:** [INFO@MODULAROUTLOOKIRELAND.COM](mailto:INFO@MODULAROUTLOOKIRELAND.COM)

   **@MODULAROUTLOOKIRELAND**

[WWW.MODULAROUTLOOKIRELAND.COM](http://WWW.MODULAROUTLOOKIRELAND.COM)