



---

We design and build modular homes to customers specifications.  
Modular Outlook Ireland provides a high quality and affordable way of alternative  
living to all our customers in Ireland, UK and Europe.



Modular Outlooks Ireland builds are built at our factory and delivered to site for installation. Our units are designed for maximum comfort, durability and aesthetic appeal, They have a low impact on the environment in which they are placed, while maintaining the same properties of a traditional building.



## STANDARD SPECIFICATIONS

ALL UNITS ARE TURN KEY UNLESS  
INSTRUCTED OTHERWISE.

- 100mm Insulation
- Double glazed aluminum Doors and windows
- Dual heating system
- Air Con
- Air recuperators
- Floors
- 2m of kitchen cabinet including Sink and 2 element Hob
- Unit is wired and plumbed
- Internal and external lighting

## OPTIONAL EXTRAS

- ✓ Feature walls
- ✓ Triple glazed windows
- ✓ Stretched ceiling
- ✓ Bathroom
- ✓ Composite patios
- ✓ Roofed patios
- ✓ Jacuzzis
- ✓ Built in Sauna
- ✓ Upgraded flooring



# BUNGALOW

UNIT TYPES, SPECIFICATIONS & OPTIONS

Our Bungalow Builds are one of our more popular style builds. Ranging in sizes we've designed these bungalow builds to offer a luxurious affordable home, While still catering for customers specifications and needs.



Starting from  
3.2x7m X 22.4 sq.m  
1 bedroom 1 bathroom kitchen/living

---

PRICE **33,500**  
EX.VAT

## 1 BEDROOM

UNFURNISHED OPTIONS (EXCL BIC'S)	SIZE	DIMENSIONS	PRICE (EX VAT)
1 BEDROOM 1 BATHROOM KITCHEN/LIVING	22.4 SQ.M	3.2X7M	33,500
1 BEDROOM 1 BATHROOM KITCHEN/LIVING	25.6 SQ.M	3.2X8M	37,000
1 BEDROOM 1 BATHROOM KITCHEN/LIVING	28.8 SQ.M	3.2X9M	41,000
1 BEDROOM 1 BATHROOM KITCHEN/LIVING	32 SQ.M	3.2X10M	45,000
1 BEDROOM 1 BATHROOM KITCHEN/LIVING	35.2 SQ.M	3.2X11M	50,000
1 BEDROOM 1 BATHROOM KITCHEN/LIVING	38.4 SQ.M	3.2X12M	56,000

## 2 BEDROOM

UNFURNISHED OPTIONS (EXCL BIC'S)	SIZE	DIMENSIONS	PRICE (EX VAT)
2 BEDROOM 1 BATHROOM KITCHEN/LIVING	35.2 SQ.M	3.2X11M	52,000
2 BEDROOM 1 BATHROOM KITCHEN/LIVING	38.4 SQ.M	3.2X12M	59,000



# VILLAS

UNIT TYPES, SPECIFICATIONS & OPTIONS

Our bespoke Villa builds are larger scale builds than our bungalows. Allowing for three and four bedroom options. With many different villa sizes available, floor plans and interior layouts can be altered for customer specifications. Our villas offer a luxurious affordable home with a modern interior design.



Starting from  
**6x6m X 36 sq.m**  
 2 bedroom 1 bathroom kitchen/living

---

**PRICE** **64,000**  
 EX.VAT

## 2 BEDROOM

UNFURNISHED OPTIONS (EXCL BIC'S)	SIZE	DIMENSIONS	PRICE (EX VAT)
2 BEDROOM 1 BATHROOM KITCHEN/LIVING	36 SQ.M	6X6M	64,000
2 BEDROOM 1 BATHROOM KITCHEN/LIVING	54 SQ.M	6X9M	91,000
2 BEDROOM 1 BATHROOM KITCHEN/LIVING	72 SQ.M	6X12M	105,000

## 3 BEDROOM

UNFURNISHED OPTIONS (EXCL BIC'S)	SIZE	DIMENSIONS	PRICE (EX VAT)
3 BEDROOM 1 BATHROOM KITCHEN/LIVING	72 SQ.M	6X12M	108,000
3 BEDROOM 2 BATHROOM KITCHEN/LIVING	72 SQ.M	6X12M	108,000



## CUSTOM BUILDS

UNIT TYPES, SPECIFICATIONS & OPTIONS

Our Garden and Office Builds are Ideal for people who work from home or have a hobby or pastime which requires its own space.. Ranging in sizes we've designed these Office builds to offer a luxurious affordable home work space.



All build Sizes can be customized to suit customers needs.

### DELIVERY & DEPOSIT

Lead times is 12 - 15 weeks from payment depending on factory space at the time. We require a deposit of 50% upon signing the build contract and 50% after inspection and before delivery to site

### TRANSPORT

Free nationwide Delivery

**EMAIL:** SALES@MODULAROUTLOOKIRELAND.COM



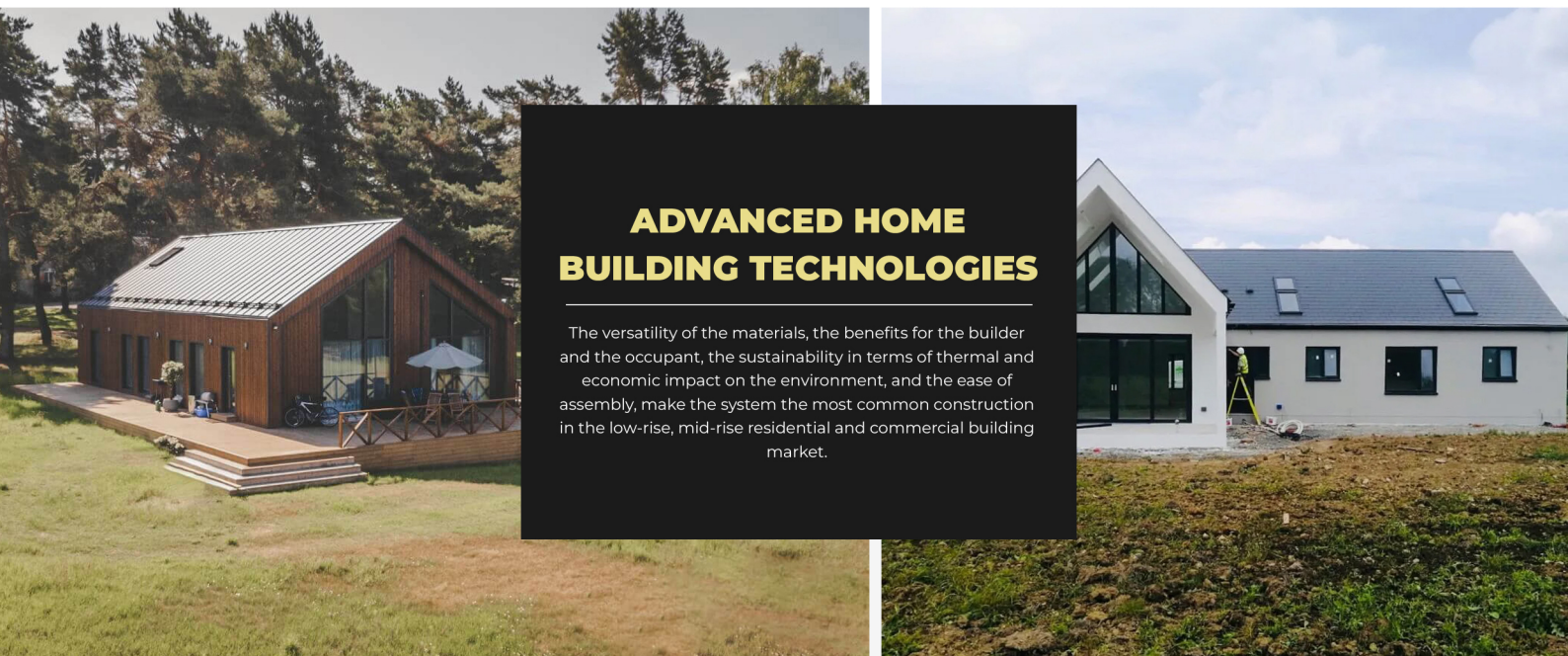
WWW.MODULAROUTLOOKIRELAND.COM



# SIP HOMES

AN UNRIVALLED RANGE OF BUILDING PRODUCTS

Modular Outlook Homes brings together cutting-edge sustainable housing technologies to conserve energy resources and replace old construction methods. We are proud to be at the forefront of the market for high-quality panel systems for residential, commercial and industrial buildings.



## ADVANCED HOME BUILDING TECHNOLOGIES

The versatility of the materials, the benefits for the builder and the occupant, the sustainability in terms of thermal and economic impact on the environment, and the ease of assembly, make the system the most common construction in the low-rise, mid-rise residential and commercial building market.

## AN INNOVATION-DRIVEN EXPERIENCE

The company lives the triple challenge of quality, productivity and tight deadlines.



### TECHNOLOGY

Panel houses are assembled quickly and to a high standard on site, using panels specially made in the factory.



### OFFER

All our kits are prepared using structural insulated panels from floor to ceiling



### EXPERIENCE

To become an expert in any field, you need to spend 10,000 hours on it. A combination of theoretical and practical knowledge.



### PARTNERSHIP

Architectural concepts are made in the factory and then constructed on site without error

# SIP PANEL HOMES - WHAT ARE THE ADVANTAGES?

## ✔ TIME

very fast to build (about 2 months) – time depends on the project and the size of the building and the materials available;

## ✔ QUALITY

A SIP house meets all quality standards;

## ✔ PRICE

very low compared to other housing prices, taking into account the construction costs (materials, labour, time);

## ✔ NEW

no one has lived there yet;

## ✔ DESIGN

every project looks beautiful and aesthetically pleasing;

## ✔ ENERGY SAVING

a construction technology that saves heat costs;

## ✔ ENERGY EFFICIENCY

on request, can meet A++ standards;

## ✔ ENVIRONMENTALLY FRIENDLY

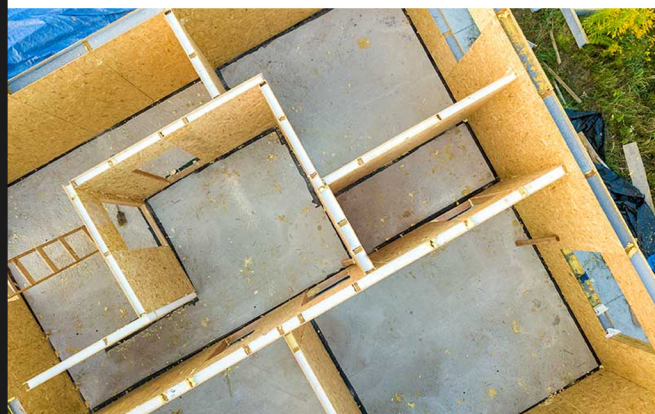
no pollution for the environment, no pollution for you and no construction waste on site;

## ✔ DURABILITY

SIP homes have a very long lifetime;

## ✔ RESISTANCE TO WEATHERING

(rain, snow, cold, heat).



## SIP HOUSE - WHAT MAKES IT SPECIAL?

SIP House – when you want it fast and quality! And it's aesthetically pleasing, too, because the house designs follow the design trends for such homes. So everyone can choose the SIP panel house project they like best and our team will get to work building it. It is worth noting that Modular Outlook Ireland also designs to individual orders, so you will have a unique SIP panel house.

**EMAIL:** SALES@MODULAROUTLOOKIRELAND.COM

   @MODULAROUTLOOKIRELAND

WWW.MODULAROUTLOOKIRELAND.COM



# CONTACT US AT

**EMAIL:** SALES@MODULAROUTLOOKIRELAND.COM

WWW.MODULAROUTLOOKIRELAND.COM



**@MODULAROUTLOOKIRELAND**

